

EPTAR REINFORCEMENT



This solution helps designers to draw documents and lists the necessary reinforcement for their buildings in ArchiCAD. The application provides tools to define all 2D drawings as well as complete 3D models.



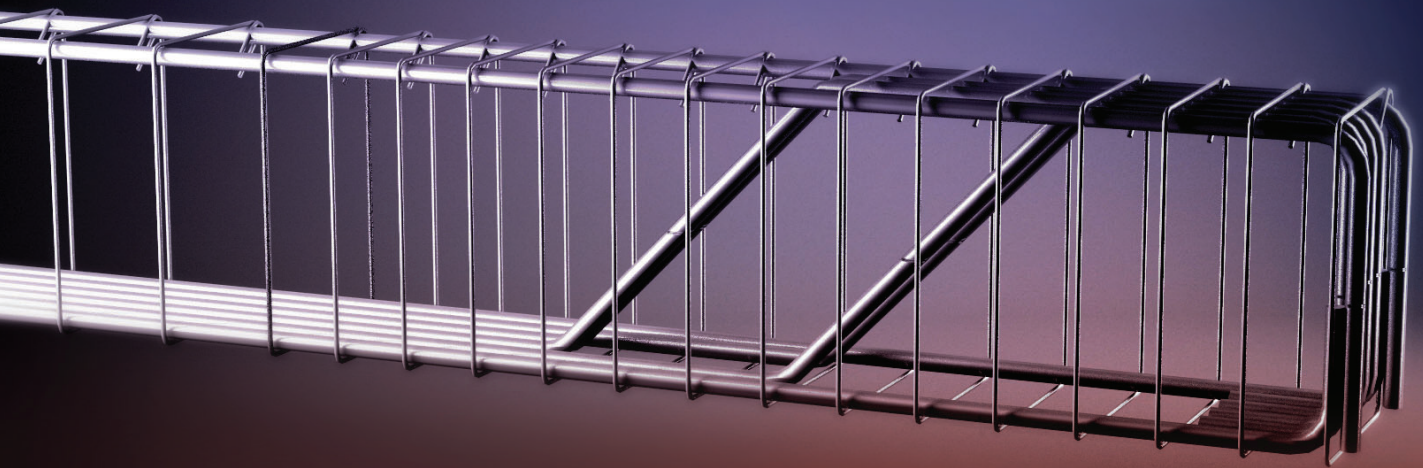
Sell ArchiCAD to civil engineers as well. Broaden your customer circle with engineers and engineer offices by providing this powerful solution for structures and quantities.

By extending the functionality of ArchiCAD with Reinforcement tool, ArchiCAD is not exclusively for architects anymore but structural engineers are also invited to join the projects.

Reinforcement helps designers to draw documents and list the necessary reinforcement for their buildings in ArchiCAD. The solution provides tools to define all 2D drawings as well as complete 3D models.

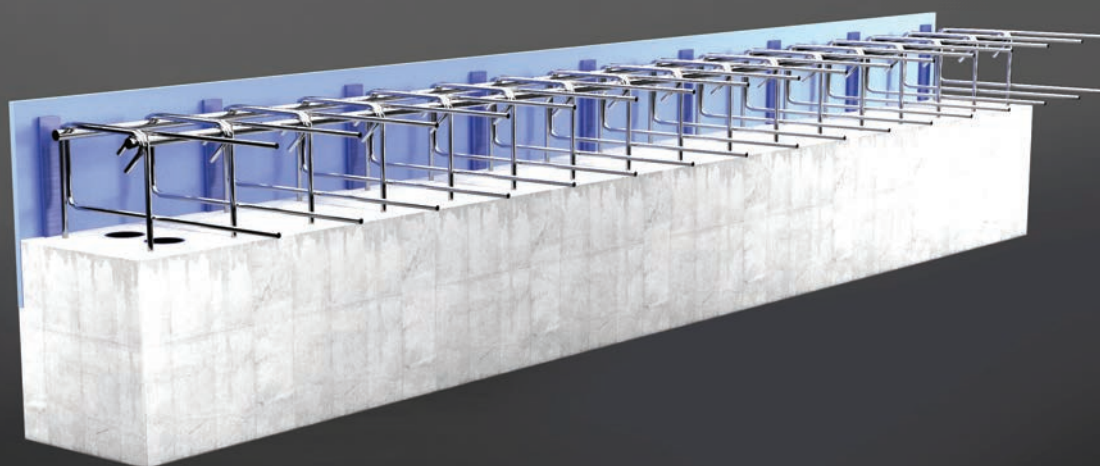
Reinforcement was developed in 2013 with a goal to connect architects and structural engineers by giving them the opportunity to work on common projects using the same software, ArchiCAD.





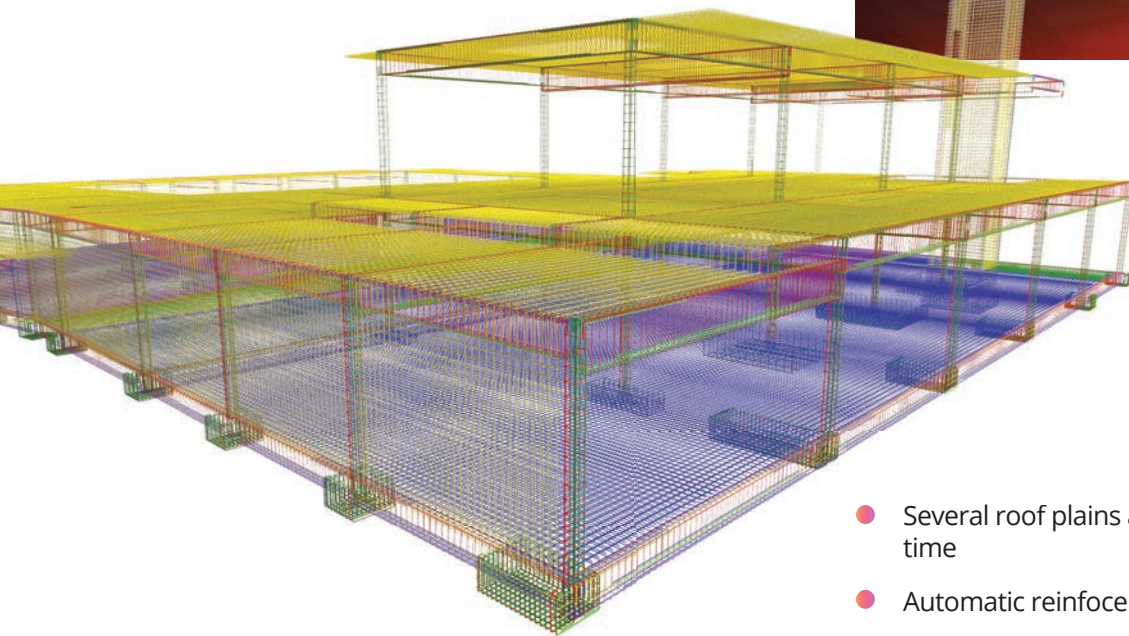
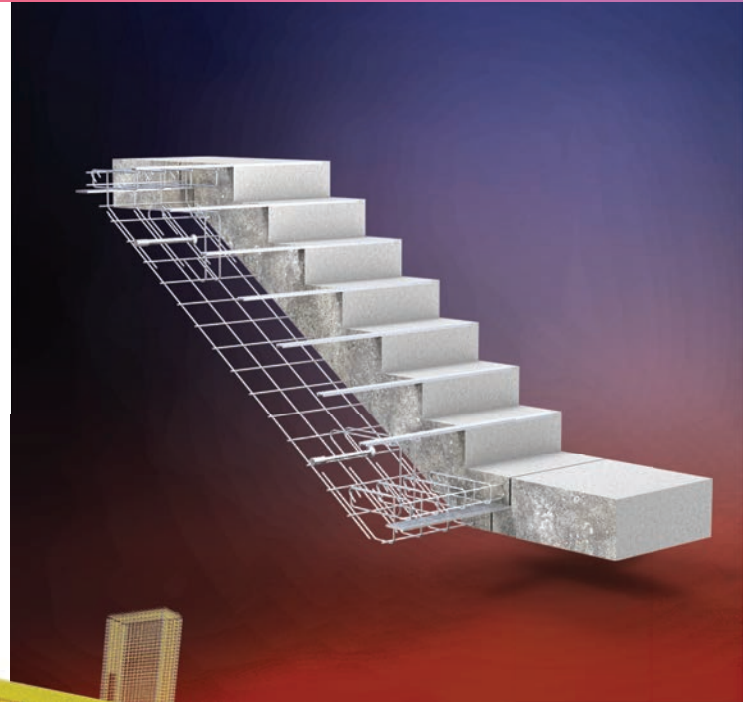
OVERVIEW OF THE FEATURES

- ✓ License borrowing: get for limited time (7 days) the activation key offline. After this time period the key become online again. This option is but permanent, and you can use it at any time. It can be ordered for your existing license, too.
- ✓ Most used rebar and stirrup forms are preset, but custom polygonal forms can be set too
- ✓ Steel elements can be rotated, thus more difficult constructions (e.g. stairs) can be modeled
- ✓ Complex elements (columns, beams and crownings) can be defined
- ✓ Many view and display options
- ✓ Cutting list generation
- ✓ Automatic correction of enumeration
- ✓ Changes can easily be made on the layout and in the Object Settings window as well
- ✓ Automatic reinforcement of walls
- ✓ Several walls or slabs can be reinforced with a single selection
- ✓ Multiple layers of rebar can be placed at a time

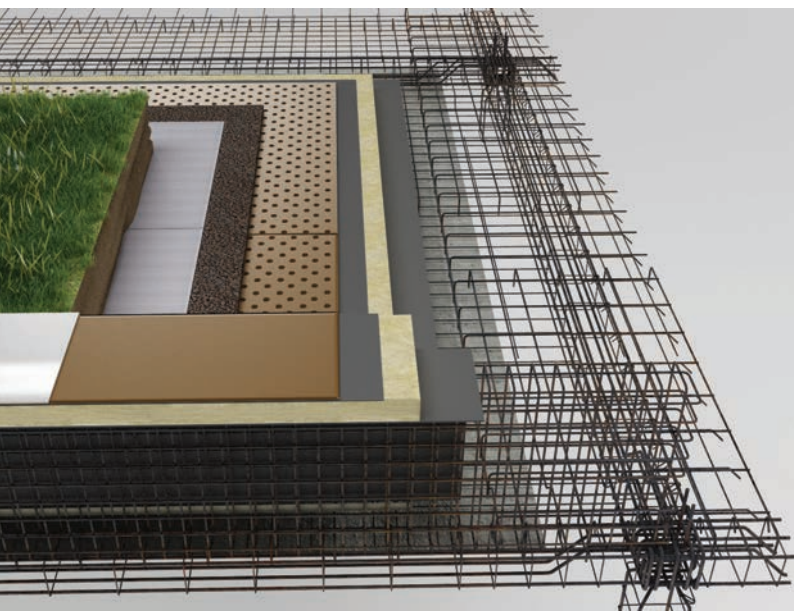


REINFORCEMENT MAIN FEATURES

- AC25 compatibility
- Mesh board designer
- More exact Cutting list for Mesh
- More exact Cutting list for Rebar
- Some new additional elements
- Archicad 24 compatibility
- Automatic Reinforcement of CURVED walls
- Automatic Reinforcement of SLANTED walls
- Reinforcement wreaths and edges on slabs
- Shear rebar placement for slab cutouts corners
- Automatic reinforcement of roofs with mesh or rebar tool



- Several roof plains are now reinfoceable at the same time
- Automatic reinforcement of complex roofs
- A floating palette that can be placed likely
- Automatic reinforcement of walls
- Several walls or slabs can be reinforced with a single selection
- Multiple layers of rebar can be placed at a time
- Placement of upturned or folded mesh
- Distributable rebars along the curve
- New rebar object which linear meter can be adjusted in kg/m





This solution helps designers to draw documents and lists the necessary reinforcement for their buildings in ArchiCAD. The application provides tools to define all 2D drawings as well as complete 3D models.

- Adjustable value of concrete cover in case of top or bottom reinforcement
- The different length rebars can be displayed separately in the cutting list
- In case of mesh, the multidirectional rebars can be listed separately
- In case of circle cross-section the radius of the stirrup is displayed in the list
- The value of the joint length is displayed in the list
- exact display of rebar bending in 3D
- dimension unit choice global display settings (2D, 3D, labels and texts)
- intelligent markers
- new stirrup types
- label option for views
- custom label texts
- preset common rebars and stirrups
- custom polygonal rebar forms
- rebars can be rotated in space
- automatic array of meshes and bars
- complex element: unlimited use of columns
- complex element: unlimited use of beams
- complex element: unlimited use of crownings
- unlimited rebar placement
- making automatic cutting list
- more layout display options
- displaying views on the floor plan
- exporting list into TXT

